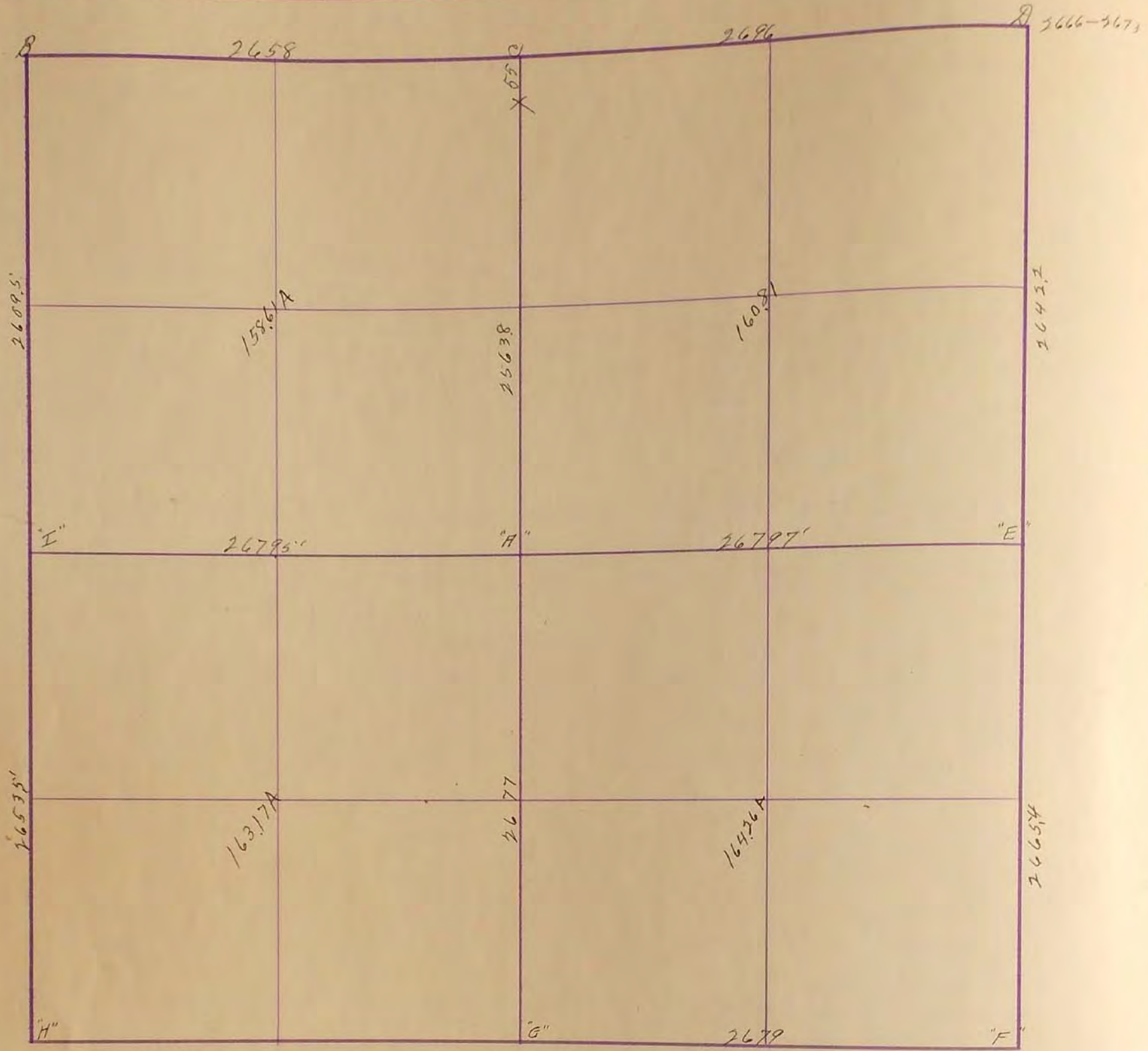


SURVEYOR'S RECORD

Section 28

Township 105

Range 40



Oct. 17 - 1924

B. stone north rail at R.P. 7148 south

Ry. fence cor. 4748 E.

C. stone and old fence fence cor on ^{line} 32' S

D. stone 12x12x28 - 2 small stones

Fence cor. 446' S E. F. cor. 426' S W. F. cor. 336' N W.

+ 423' N E.

E. 2 stones B F. cor. 46 S E. Cottonwood 53' S W.

Fence cor. 41' S W. F. cor. 39' N W. I. P. 467' N E.

F.

"D" "Found Stone": R.P. Edge of Steel Cor. post SW. 462' : R.P. Tack in cor fence post SE. 446'

"E" "Found Stone": R.P. Edge of Steel Cor. post SW. 402' : R.P. Tack in cor fence post SE. 413'

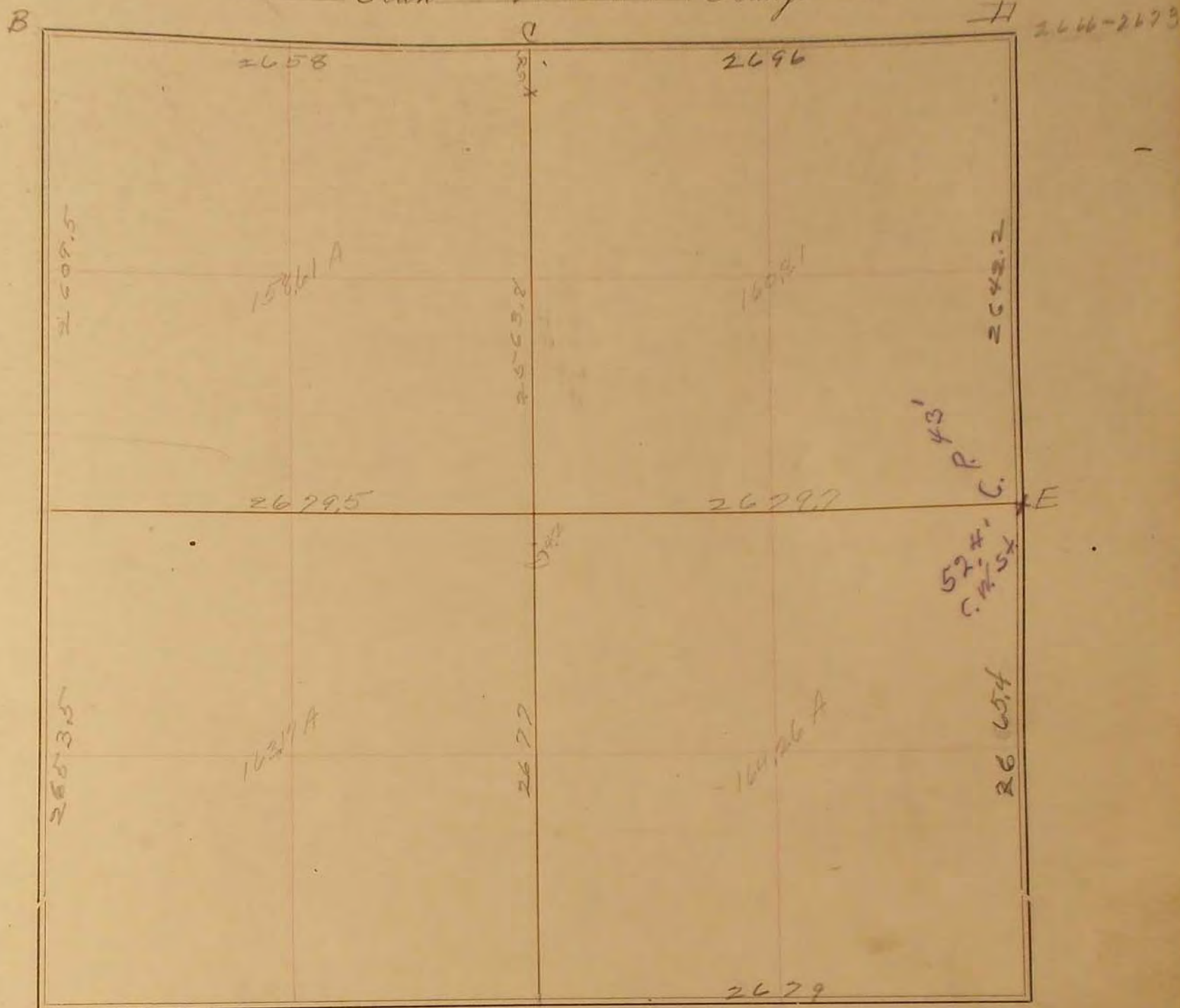
FA. March 1934

"I" "Stone": R.P. South end of Culvert 382' : R.P. North Edge of Culvert west side 288' :

28
29

SURVEY No. 1111

Section 28 Town 105 Range 10



FIELD NOTES.

Oct. 17, 1924.

B Stone. North rail of R.Y. 91.4 South, R.Y. fence corner 47.4 S.E.

C Stone + old corner. F. cor on line 32' S.

H Stone 12x12x28" two small stones. F. cor 44.5 SE. F. cor 42.6 SW - F. cor 33.6 NW, T. P. 42.3 NE

E 2 Stones B. F. cor. 46' SE., Cottonwood 53' SW., F. cor. 41. SW., F. cor. 39' NW, T. P. 46.5 NE.

F

"D" Found Stone" R.P. Edge of Steel Cor. post SW. 46.2' : R.P.

Tack in cor fence post SE. 44.5'

"E" Found Stone" R.P. Edge of Steel cor. post SW. 40.2' R.P. Tack in cor.

fence post SE 41.3' 1934 F.A. March.